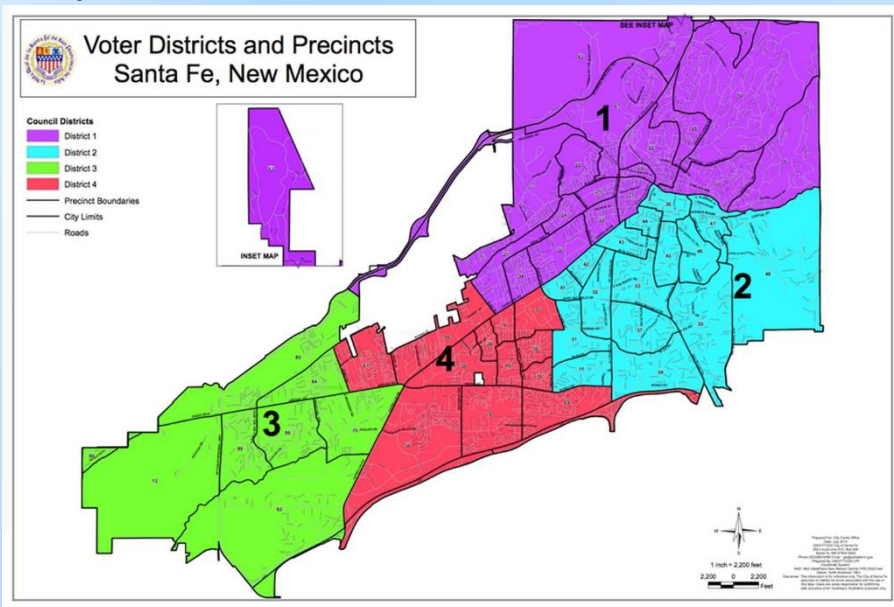


City of Santa Fe Water & Santa Fe County Utilities Water Resources Planning Webinar

October 19 & 20, 2020



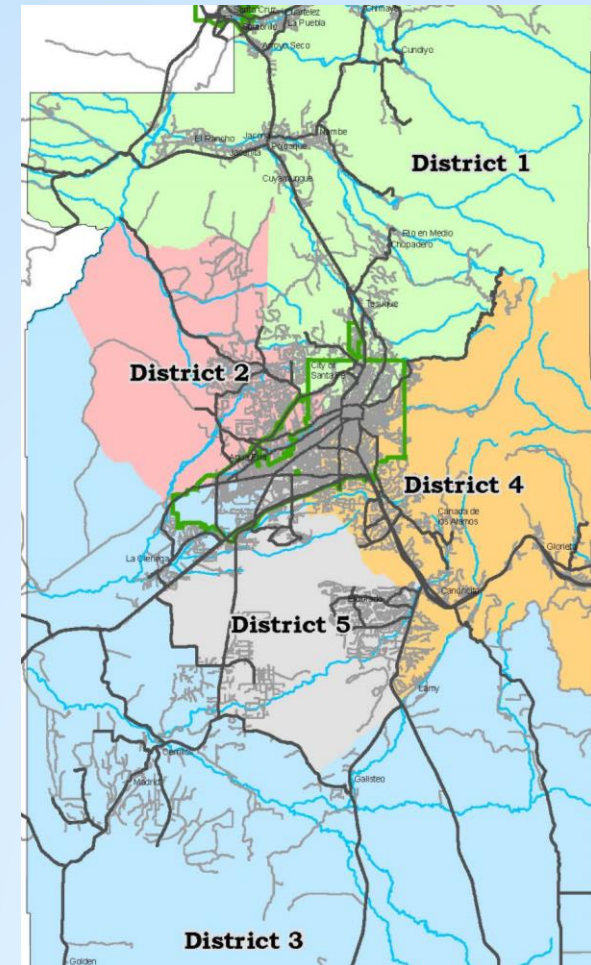
City Council Districts map for poll question



See also https://www.santafenm.gov/district_maps

County Districts map for poll question

See also: <https://santafecountynm.maps.arcgis.com/home/index.html>



Introduction of Panelists

- Jesse Roach : City of Santa Fe Water
- Lucy Moore : Moderator/Facilitator
- Virginie Pointeau : Moderator/Facilitator
- Anjali Bean : County Utilities
- Bill Schneider : City of Santa Fe Water



Webinar Purpose

- This webinar is designed to provide background information.
 - Overview of history of water resources planning and development
 - Current City and County initiatives
 - Proposed planning cycle
- There will be Q&A to provide opportunity for clarifying this background information.



Opportunities for feedback:

- Breakout sessions next week
 - Sunday 10/25 3:30 pm - 5:30 pm
 - Monday 10/26 10 am - noon
 - Thursday 10/29 5:30 pm – 7:30 pm

Zoom info: <https://santafenm-gov.zoom.us/j/8352202097>

Or dial in: 1 346 248 7799 Meeting ID: 835 220 2097

Info at https://www.santafenm.gov/water_division

- Online survey (more on this later).

<https://forms.gle/8DxJ3aCAzzXmpArw5>

or from https://www.santafenm.gov/water_division

or https://www.santafecountynm.gov/public_works/utilities/wrp



Planning Cycle: Key outcomes desired

1. Planning Approach
2. Scenario Development
 - a) Supply Scenarios
 - b) Demand Scenarios
3. Preferred Projects & Initiatives
4. Long Range Water Resource Plans



Planning Cycle: Proposed Schedule

Year	Objective	Spring	Summer	Fall	Winter
2020	Define Process		Draft 5-Year Planning Process	Public workshops on process	Final 5 Year Planning Process
2021	Supply & Demand Scenarios	Public workshops on supply and demand	Draft Supply and Demand Scenarios	Public Comment	Final Supply and Demand scenarios
2022	Evaluate Shortages	Public workshop on shortages		Public workshop on multiple criteria ranking	
2023	Evaluate Adaptation Strategies	Public workshop on adaptation strategies	Draft Ranked Project List	Public Comment	Final Ranked Project List
2024	Develop Plan		Draft 80 Year Water Plan	Public Comment	Final 80 Year Water Plan

Color Key:	Public Input	Public Engagement	Draft Deliverable	Final Deliverable
-------------------	--------------	-------------------	-------------------	-------------------



Year 1: Define the process

Specific Information Desired in Year 1

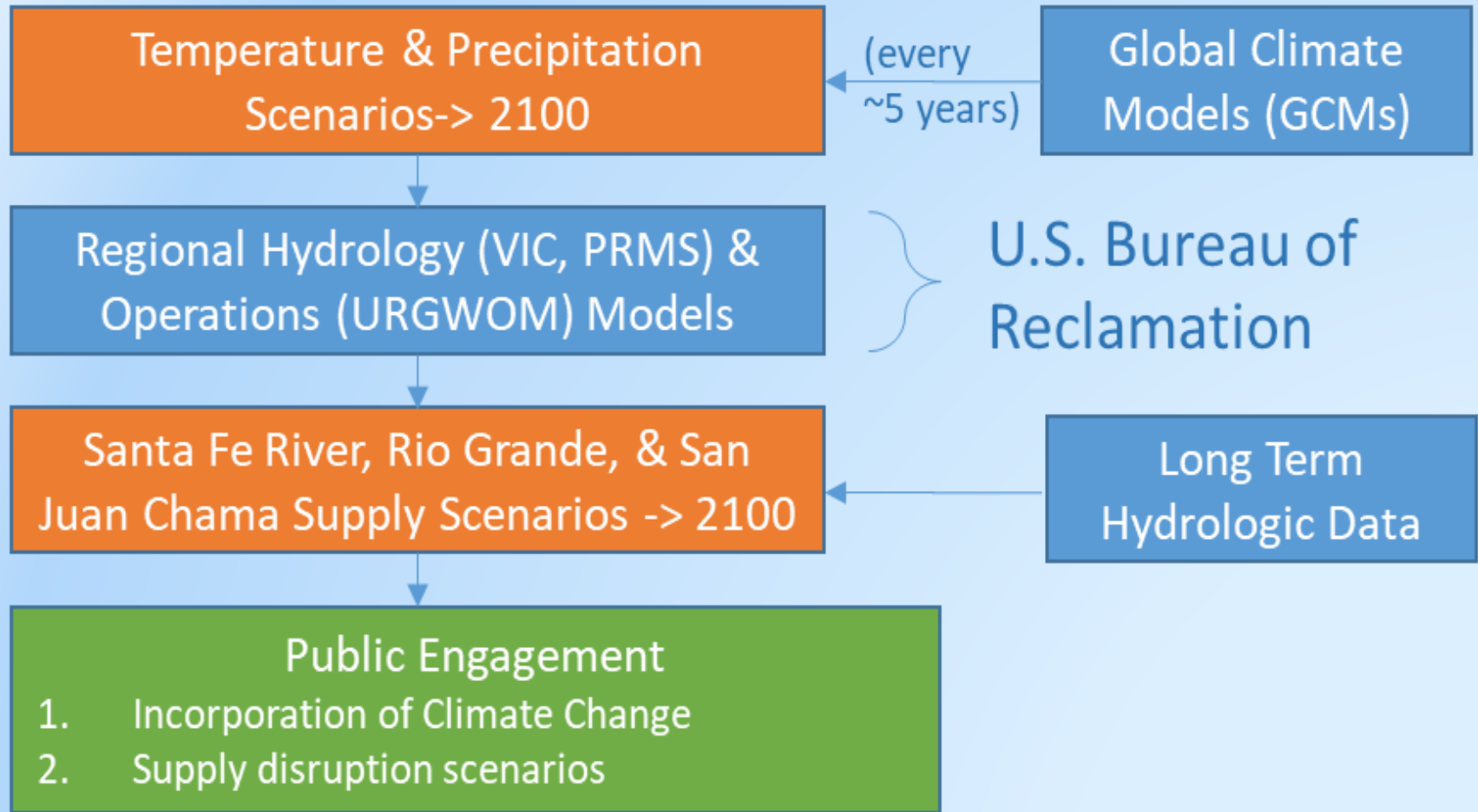
- Feedback on proposed planning process and opportunities for public engagement in that process.
- What aspect of water planning is of most the interest?
 - Projected climate change impacts to water supply
 - Natural variability of water supply
 - Projected growth in the community
 - Adaptation strategies
- Relative importance of water bill, water in the upper Santa Fe River, water in the lower Santa Fe River, aquifer levels, energy use, customer service, water system resiliency.

These will be discussed in breakout sessions. Topics of interest and relative importance questions in survey also.



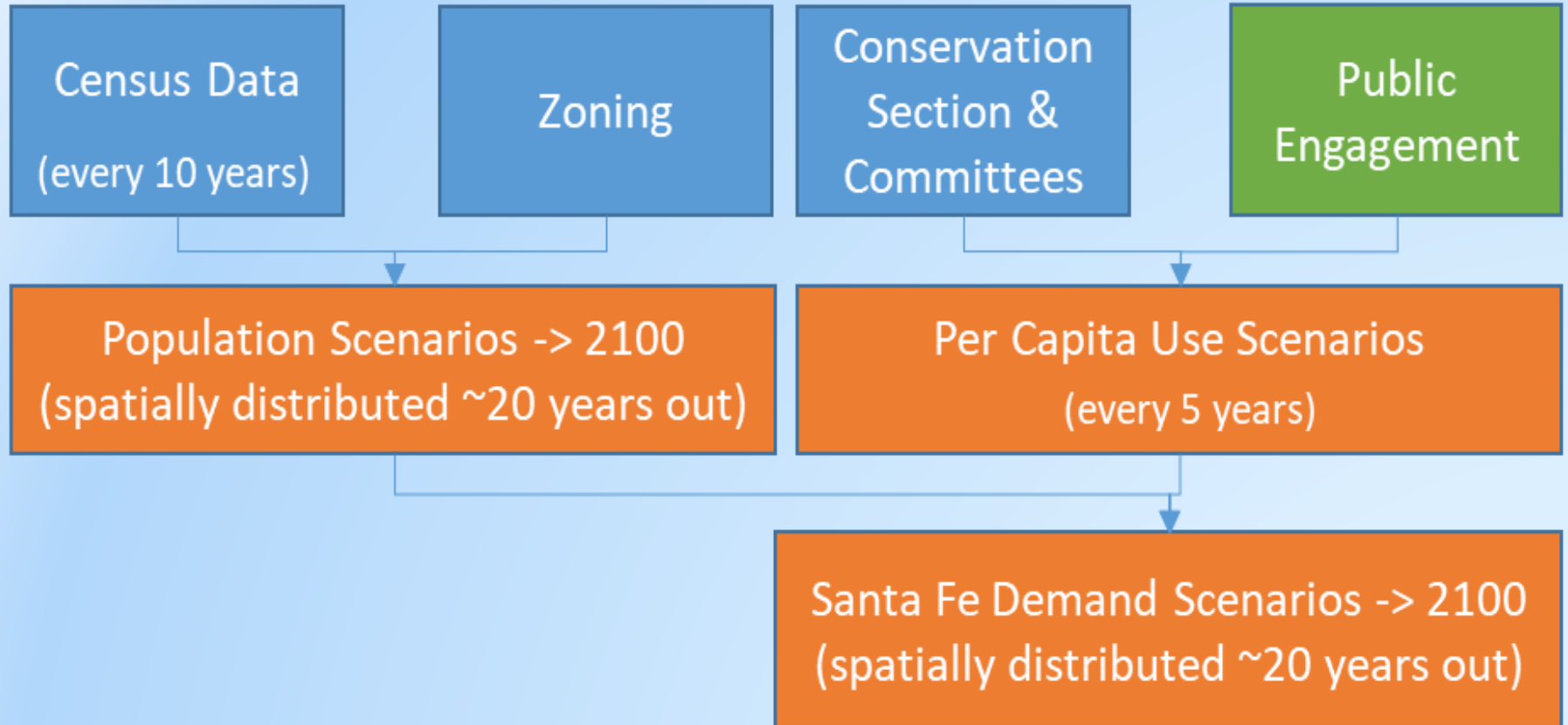
Year 2: Scenario Development

Supply Scenario Development



Year 2: Scenario Development

Demand Scenario Development



Year 2: Scenario Development

Specific Information Desired from Public Interaction in Year 2

- Relative value of different water uses
 - Outdoor water use
 - Indoor water use
- Sustainability of Water Supply
 - Perceived likelihood of supply disruptions



Year 3&4: Shortage Evaluation & Adaptation Strategies

Supply Scenario Development

Demand Scenario Development

Supply

Demand

Quantitative Assessment

Adaptation
Strategies

Water Planning Model
(Current development partially funded through Federal Grant)
(Will be updated during public engagement periods)

Shortages
Approximate costs

Public Engagement

- Supply Scenarios
- Demand Scenarios
- Ranked Projects & Initiatives

**Water Resource
Management
Plan(s) to 2100**

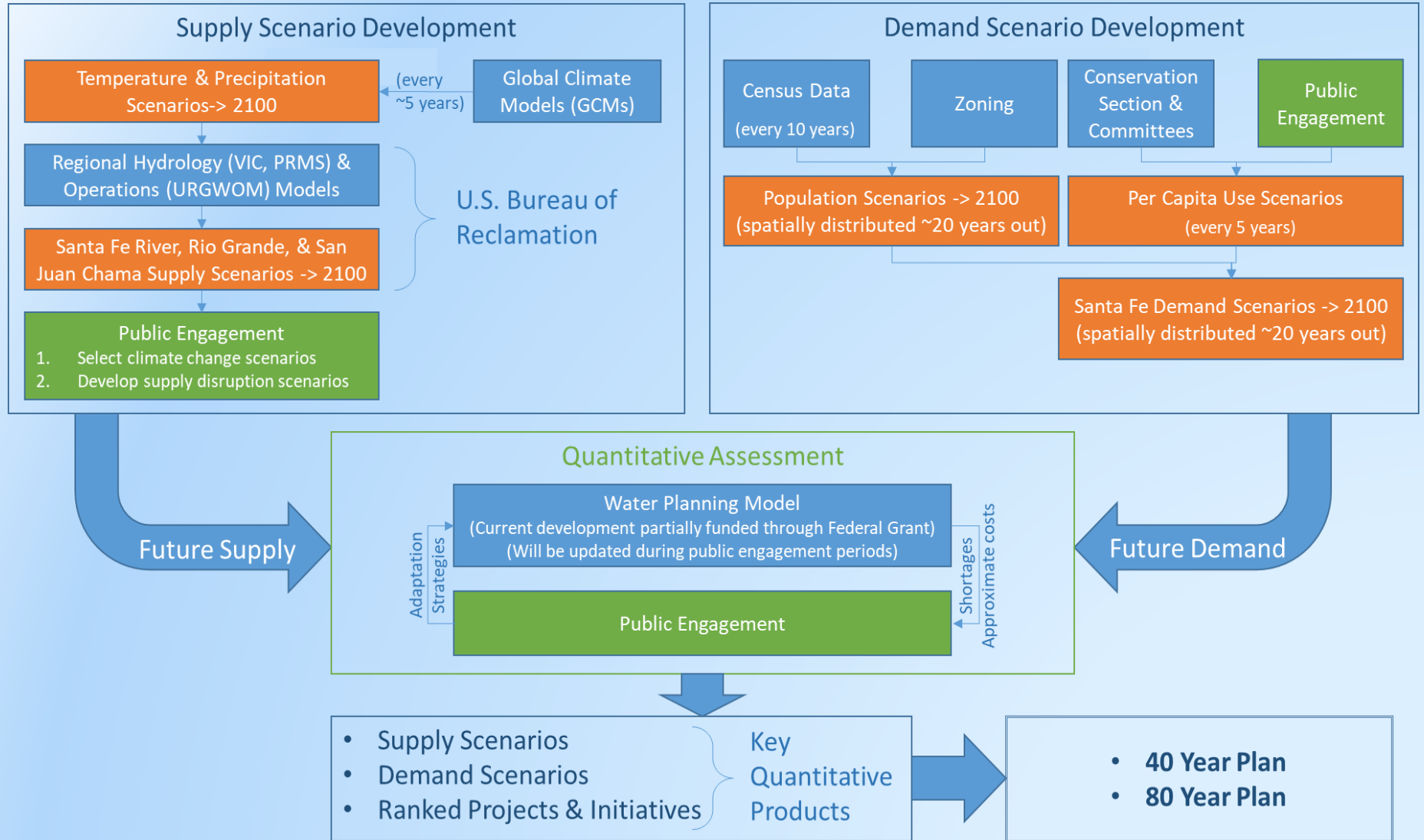
Year 3&4: Shortage Evaluation & Adaptation Strategies

Specific Information Desired from Public Interaction Year 3-4

- Relative importance of water bill, water in the upper Santa Fe River, water in the lower Santa Fe River, aquifer levels, energy use, customer service, water data availability.
- Non-market values of water in the community
 - Relative Weights for Triple Bottom Line Analysis
- Independent ranking of projects on ranked project list.



Year 5: Develop Long Range Water Supply Plans



Year 5: Develop Long Range Water Supply Plans

Specific Information Desired from Public Input Year 5

- Feedback on overall process and product



Planning Cycle: Proposed Schedule

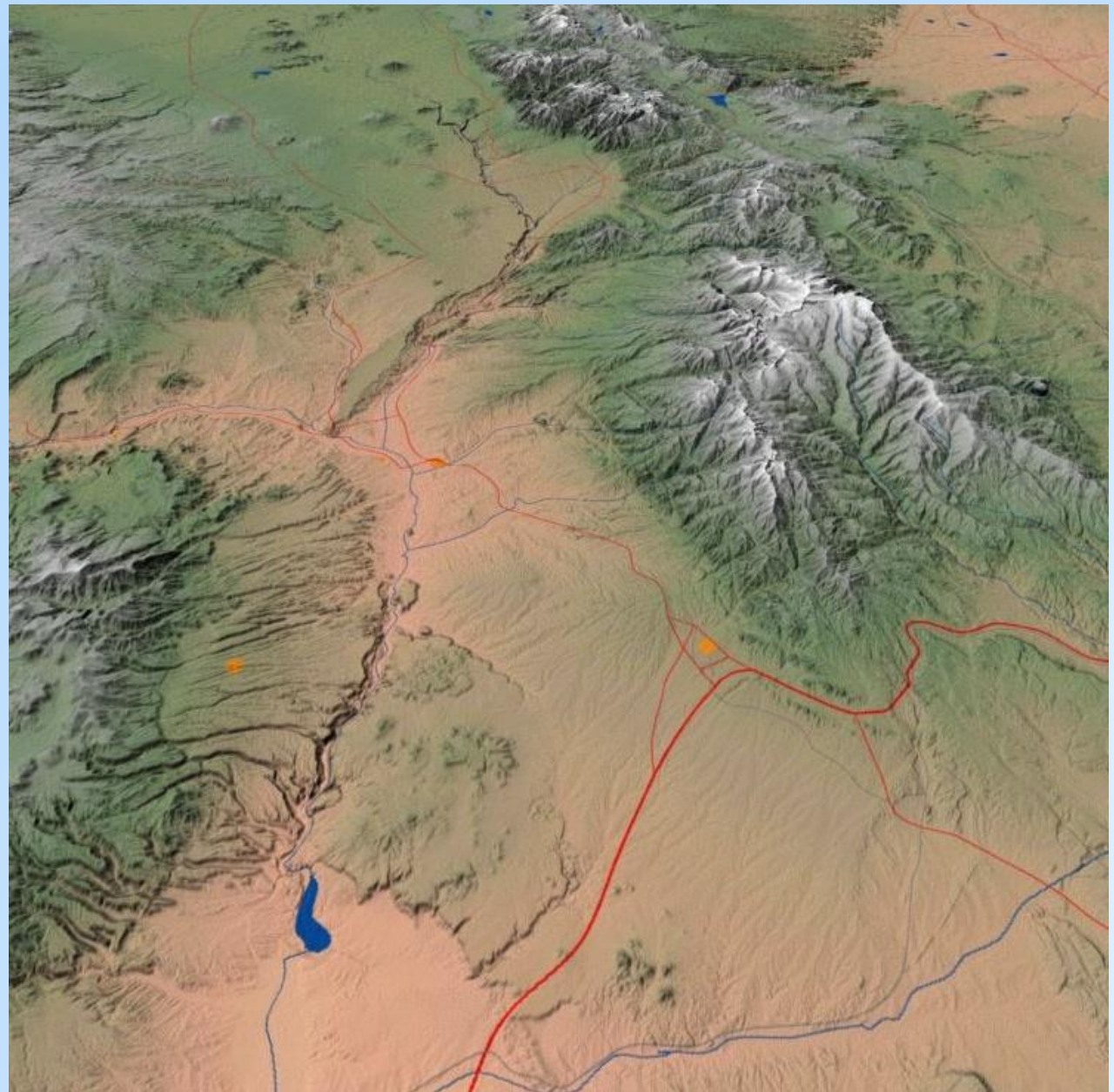
Year	Objective	Spring	Summer	Fall	Winter
2020	Define Process		Draft 5-Year Planning Process	Public workshops on process	Final 5 Year Planning Process
2021	Supply & Demand Scenarios	Public workshops on supply and demand	Draft Supply and Demand Scenarios	Public Comment	Final Supply and Demand scenarios
2022	Evaluate Shortages	Public workshop on shortages		Public workshop on multiple criteria ranking	
2023	Evaluate Adaptation Strategies	Public workshop on adaptation strategies	Draft Ranked Project List	Public Comment	Final Ranked Project List
2024	Develop Plan		Draft 80 Year Water Plan	Public Comment	Final 80 Year Water Plan

Color Key:	Public Input	Public Engagement	Draft Deliverable	Final Deliverable
-------------------	--------------	-------------------	-------------------	-------------------



Questions?

- Post your questions with the Q&A feature
- If you want to ask your question verbally, raise your hand
- Q&A questions will be answered first and verbal questions as time allows



Online Survey

- Intended to gather information on personal values around water and water planning
- 47 questions.
 - 41 multiple choice or check
 - 6 short answer
- 20 – 30 minutes to fill out

Bar code:



<https://forms.gle/8DxJ3aCAzzXmpArw5>

or from

https://www.santafenm.gov/water_division

or

https://www.santafecountynm.gov/public_works/utilities/wrp



Online Survey

- 6 potentially confusing questions

What we wanted:

Please rank the following topics from 1 (most important to you) to 6 (least)

Rank	Topic
	Cost of water (bill amount)
	Flow in upper SF river (in town)
	Flow in lower SF river (below WWTP)
	GW levels in greater SF area
	Utility customer service
	Water resiliency

How we got there w survey tool:

6 separate questions like this:

3a. (First of six similar questions) Assign a relative rank to each of the following issues: cost of water (bill amount), flow in the upper Santa Fe River (in town), flow in the lower Santa Fe River (below sewage treatment plant), groundwater levels in the greater Santa Fe area, customer service from Water Utility, long term water supply resiliency. Use each number 1-6 only once in these six questions. In this one rank COST OF WATER (BILL AMOUNT)

1 2 3 4 5 6

Most important Least important

3b. (Second of six similar questions) Assign a relative rank to each of the following issues: cost of water (bill amount), flow in the upper Santa Fe River (in town), flow in the lower Santa Fe River (below sewage treatment plant), groundwater levels in the greater Santa Fe area, customer service from Water Utility, long term water supply resiliency. Use each number 1-6 only once in these six questions. In this one rank FLOW IN THE UPPER SANTA FE RIVER (IN

1 2 3 4 5 6

Most important Least important



Online Survey

- 6 more potentially confusing questions

What we wanted:

With limited water in what order would you provide water for the following outdoor uses? (1 first to 6 last)

Order	Outdoor Use
	Private landscaping
	Private gardens
	Public landscaping
	Public/community gardens
	Public parks
	Golf courses

How we got there w survey tool:

6 separate questions like this:

7e. (Fifth of six similar questions) If you had limited potable water, provide the order in which you would provide that water to the following outdoor uses: irrigation of private landscaping, irrigation of private fruit/vegetable gardens, irrigation of public landscaping, irrigation of community fruit/vegetable gardens, irrigation of public parks, irrigation of golf courses. Use each number 1-6 only once in these six questions. In this one rank IRRIGATION OF PUBLIC PARKS

1 2 3 4 5 6

Water first Water last

7f. (Last of six similar questions) If you had limited potable water, provide the order in which you would provide that water to the following outdoor uses: irrigation of private landscaping, irrigation of private fruit/vegetable gardens, irrigation of public landscaping, irrigation of community fruit/vegetable gardens, irrigation of public parks, irrigation of golf courses. Use each number 1-6 only once in these six questions. In this one rank IRRIGATION OF GOLF COURSES

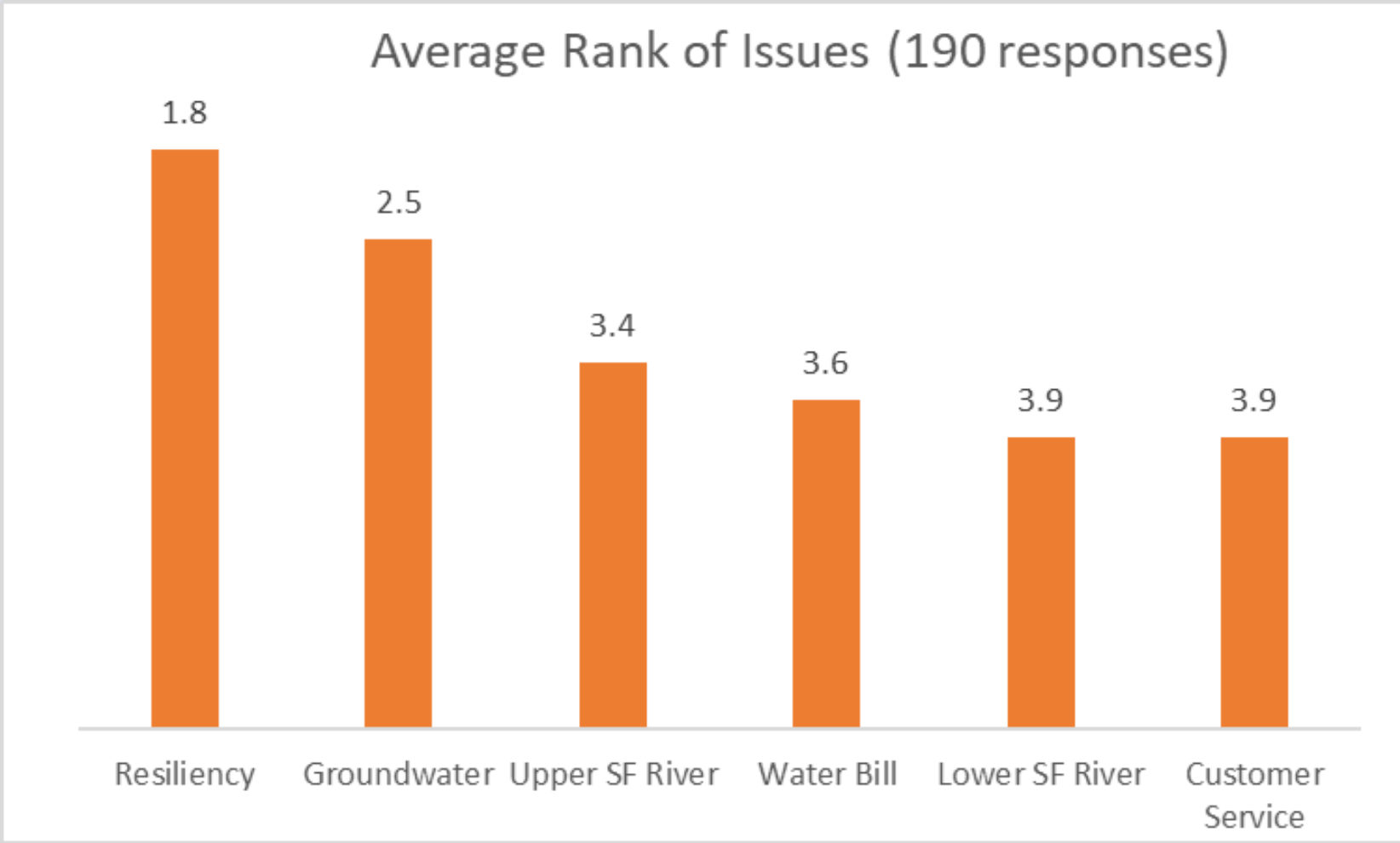
1 2 3 4 5 6

Water first Water last



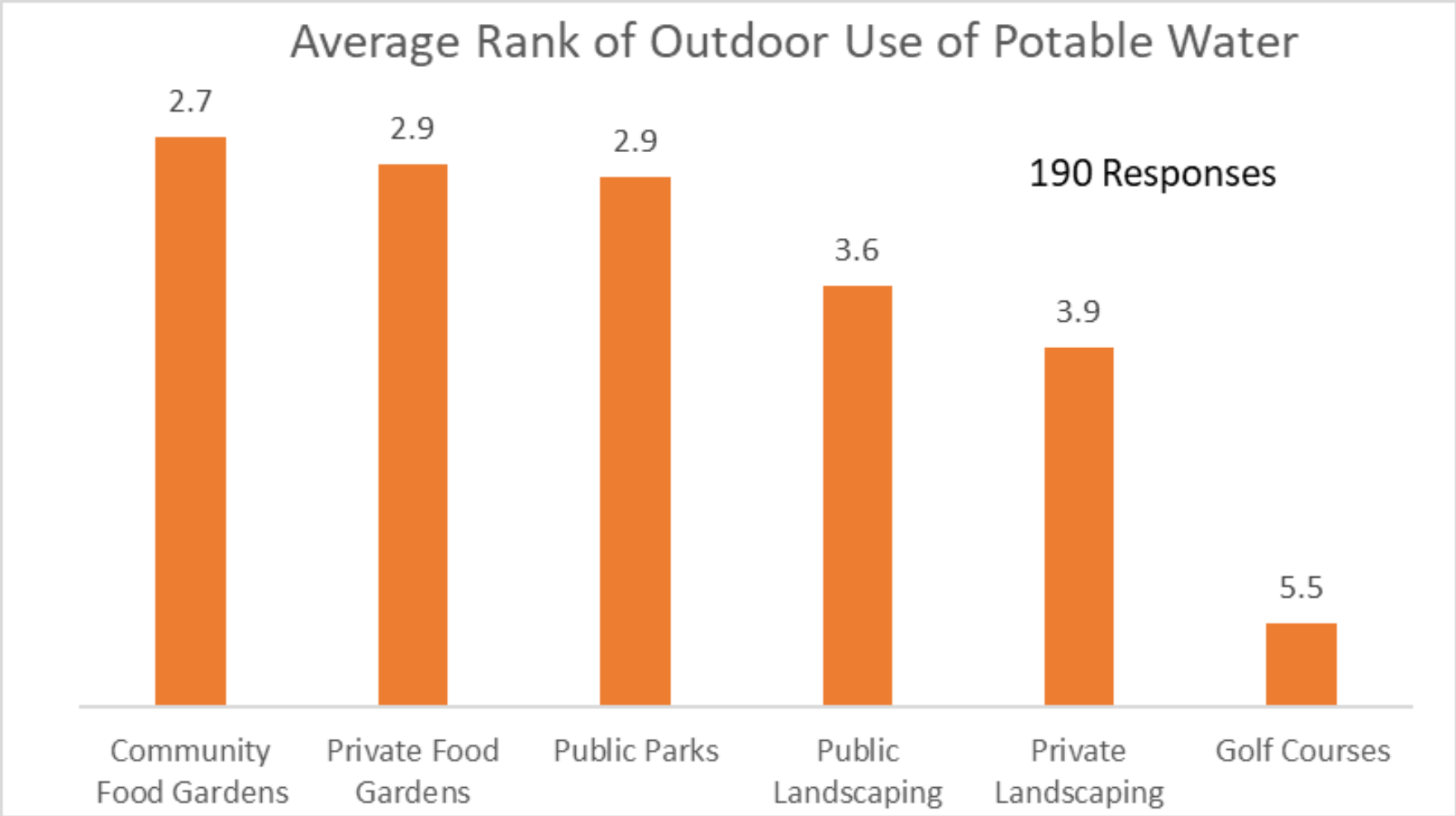
Select Online Survey results so far

- 190 responses



Select Online Survey results so far

- 190 responses

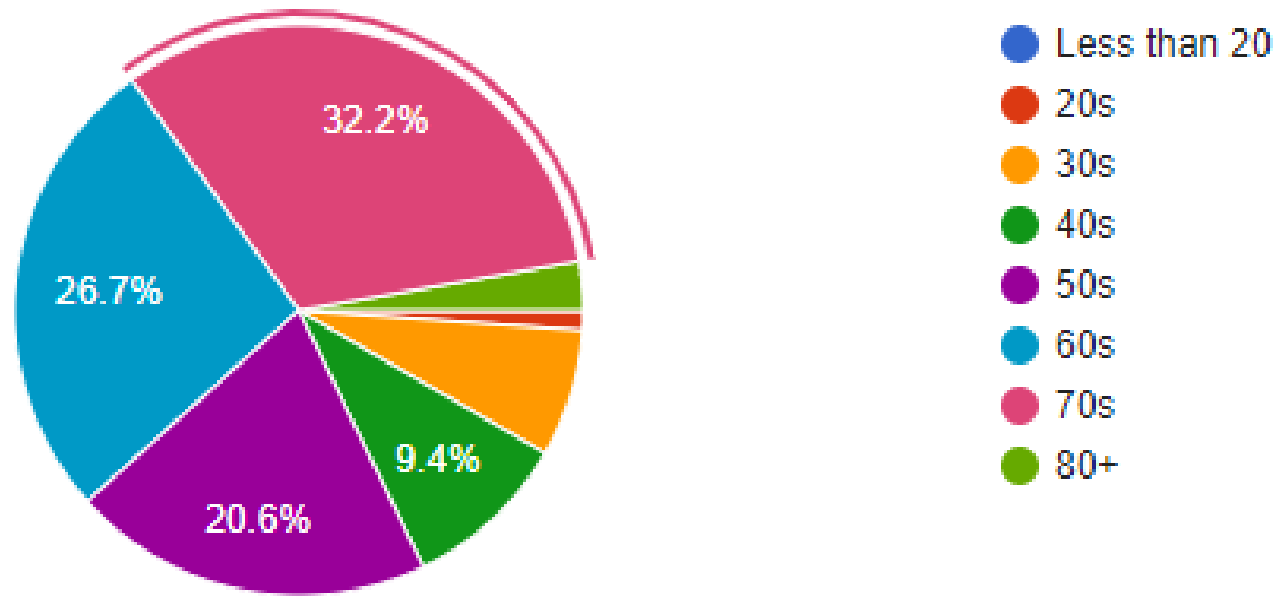


Demographics so far

- ~80% 50 or older

17. What is your age group?

180 responses

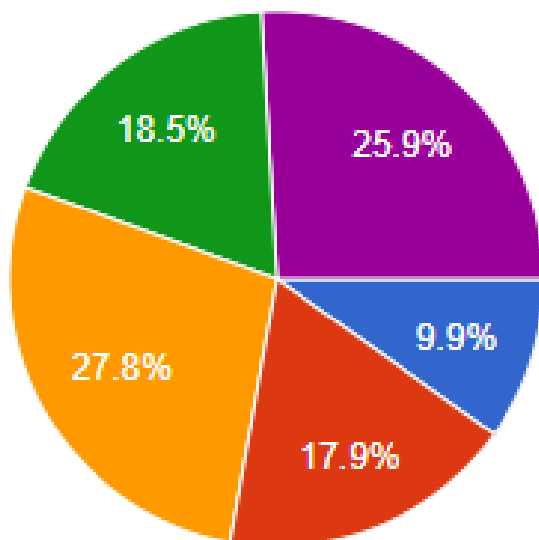


Demographics so far

- ~44% >90k household income

18. What is your annual household income?

162 responses



- Less than \$30,000
- \$30,000 - \$60,000
- \$60,001 - \$90,000
- \$90,001 - \$120,000
- More than \$120,000

Online Survey



<https://forms.gle/8DxJ3aCAzzXmpArw5>

or from

<https://www.santafenm.gov/water> division

